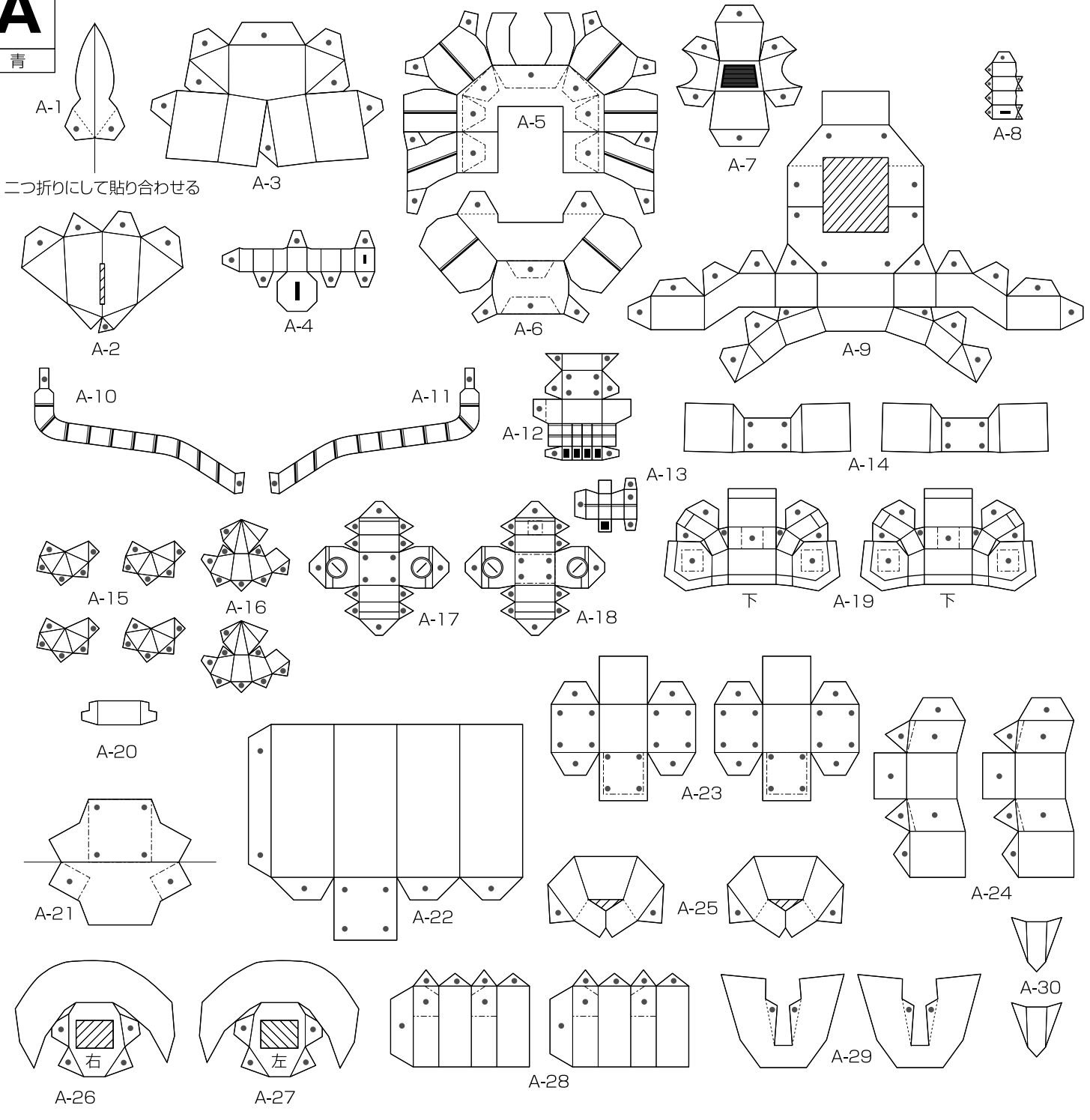
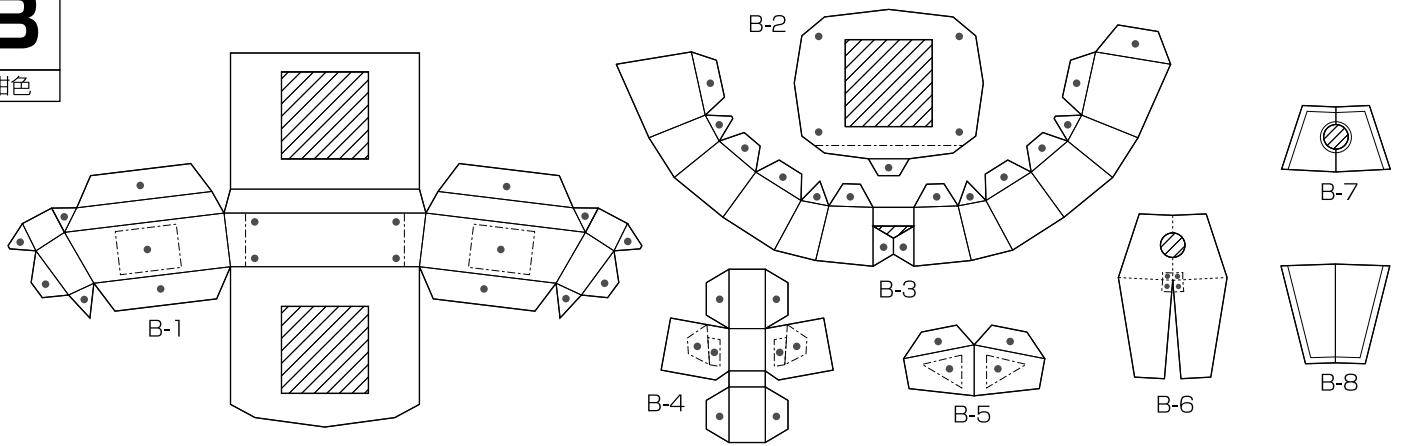


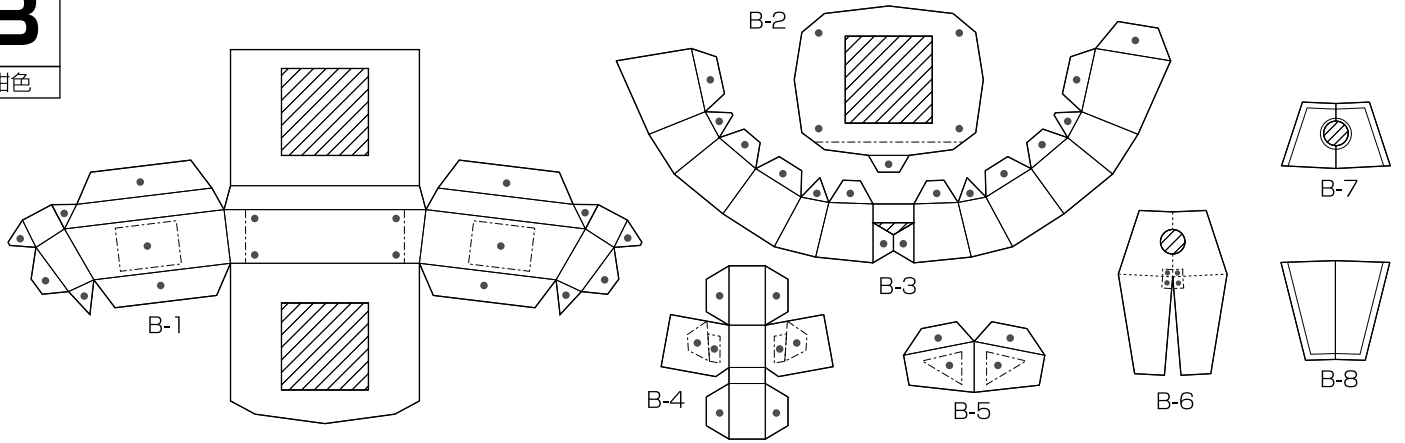
A A4サイズ
青



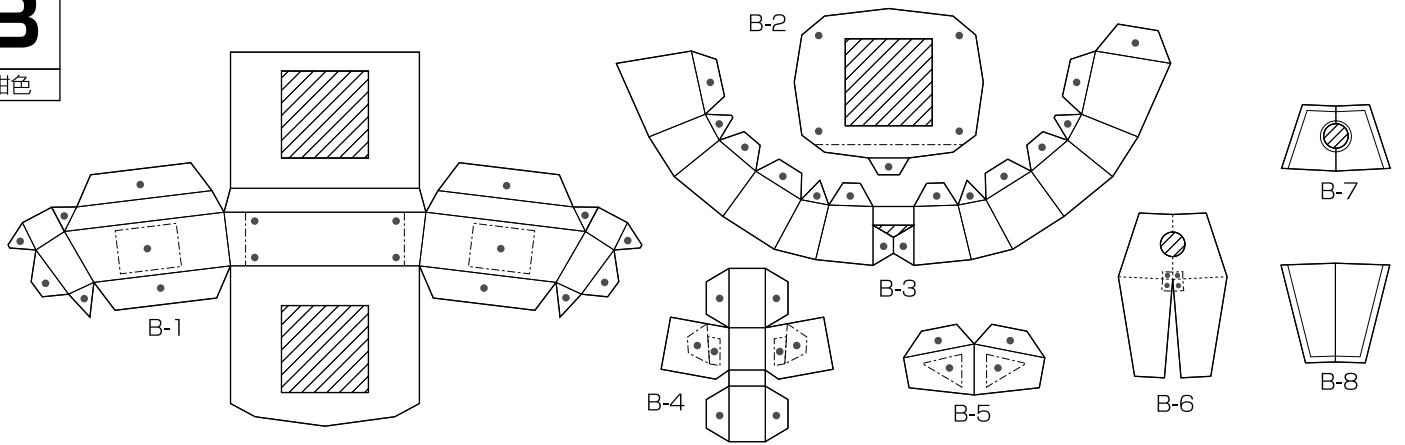
B A4サイズ
紺色



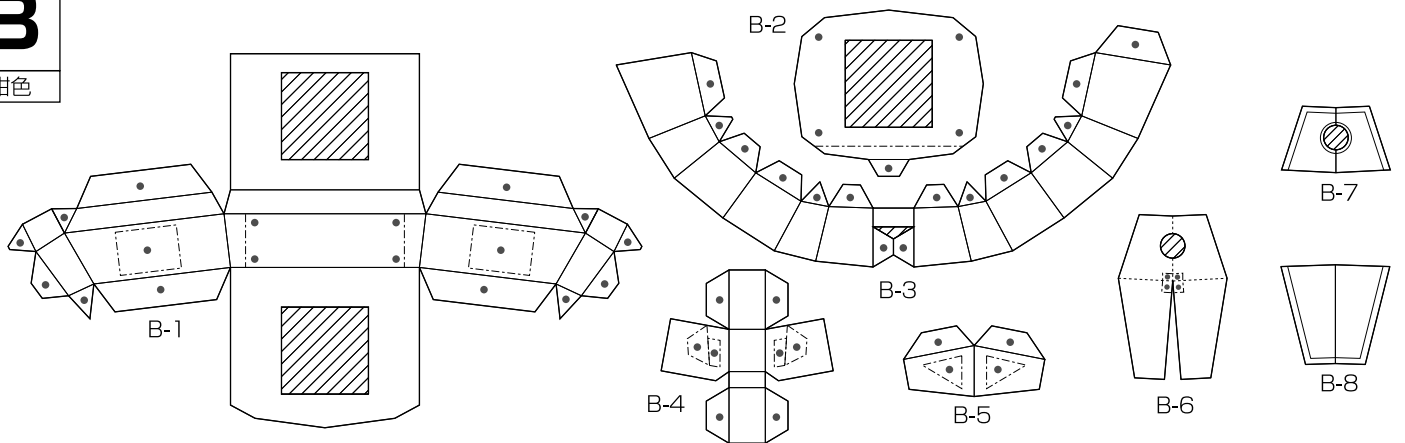
B
紺色



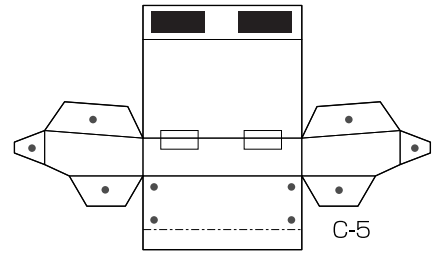
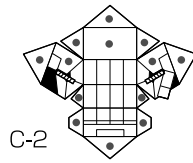
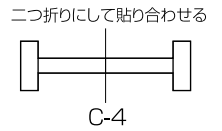
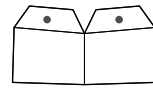
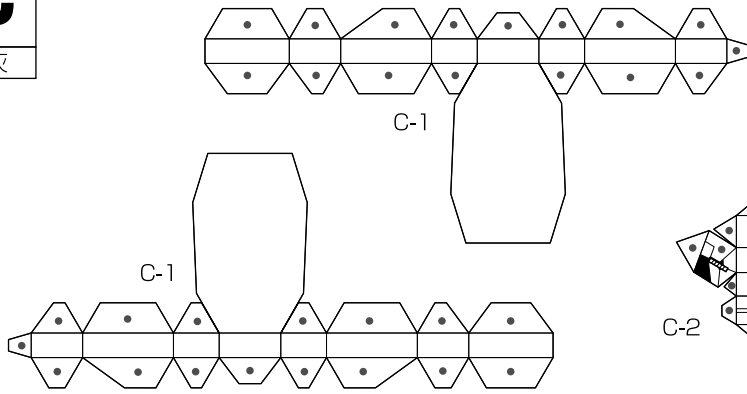
B
紺色



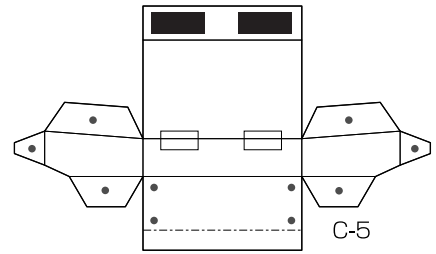
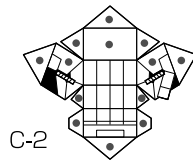
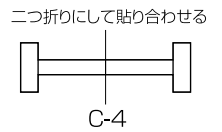
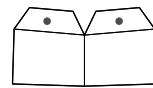
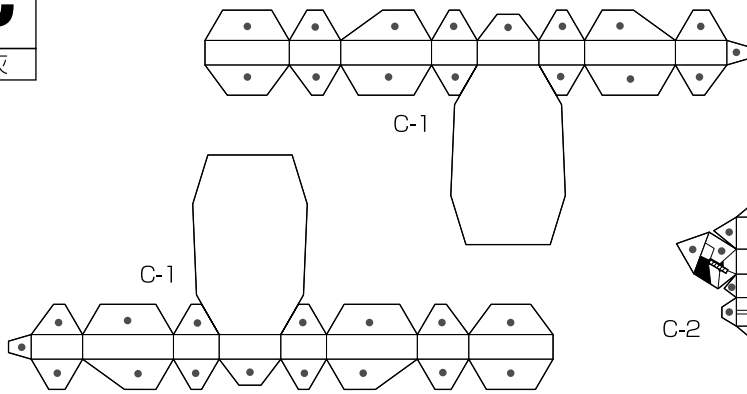
B
紺色



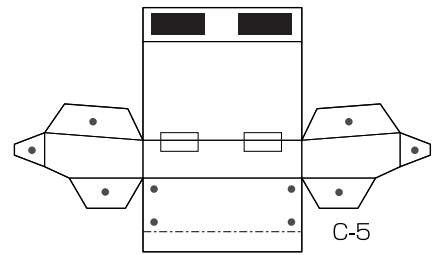
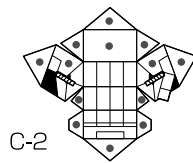
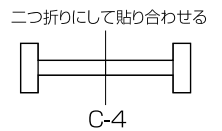
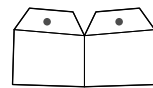
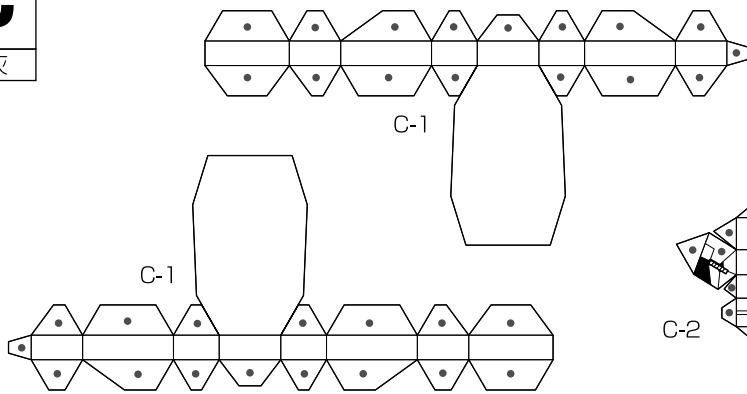
C A4サイズ
濃灰



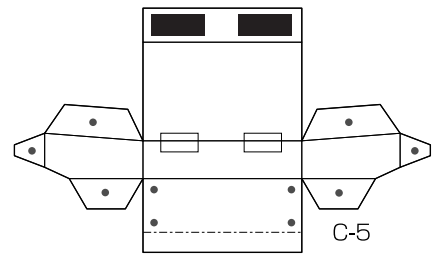
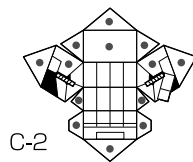
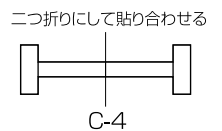
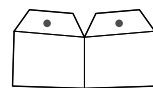
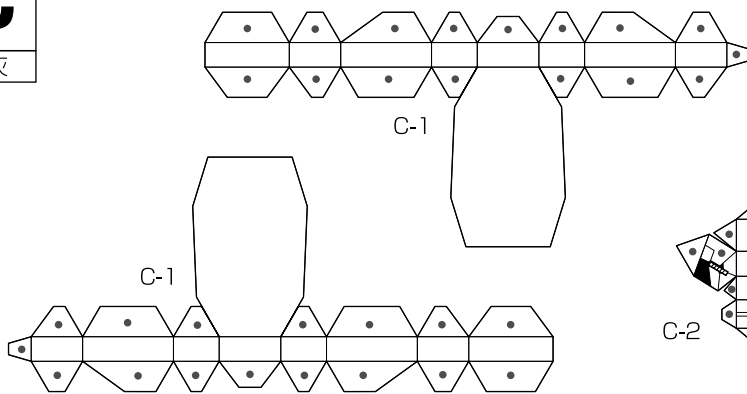
C
濃灰



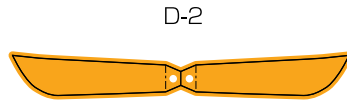
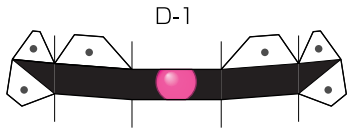
C
濃灰



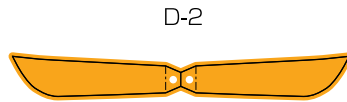
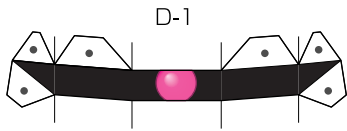
C
濃灰



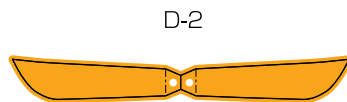
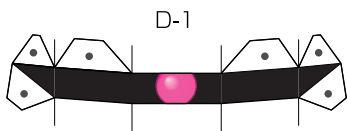
D A4サイズ
カラー



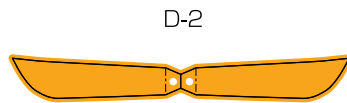
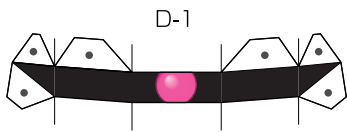
D
カラー



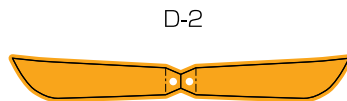
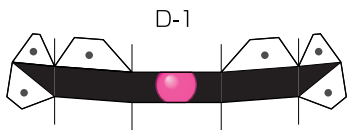
D
カラー



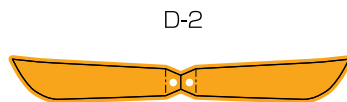
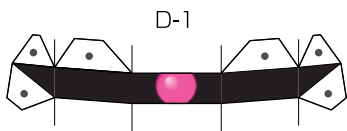
D
カラー



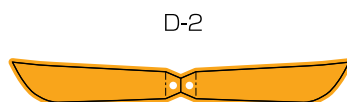
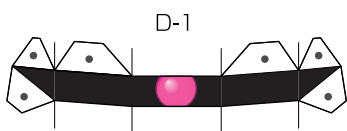
D
カラー



D
カラー



D
カラー



指定線・マークについて

□指示があるときを除き、印刷面が表になるように組み立ててください。
 ●印が「表のりしろ」、○印が「裏のりしろ」です。●印は印刷面、○印は裏面にボンドを塗って対応する面と接着してください。
 □折り線はカッターなどで軽くなぞって折り目をつけてから折り曲げます。

切断線	山折り	表のりしろ	接着する	数字の順に組立	切断
目安線	谷折り	裏のりしろ	接着しない	切り抜く	

※()内の番号は右パーツの番号です。

1

2

3

4

5 ※左右作る

6

7

8 ※左右作る

9

10