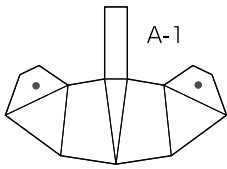
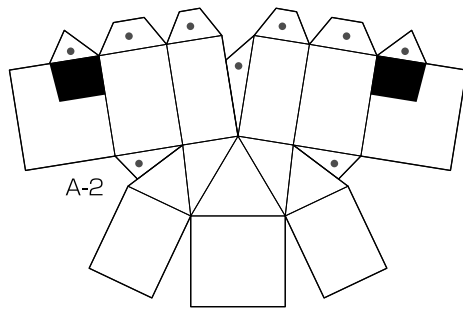


A
緑

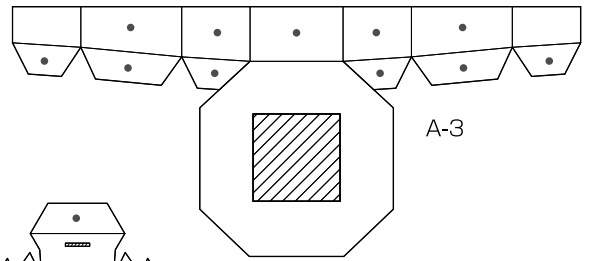
A4サイズ



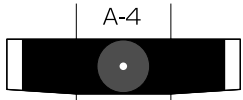
A-1



A-2

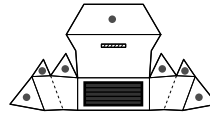


A-3

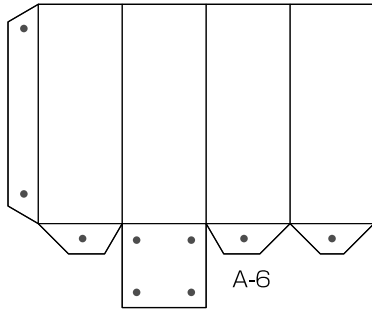


A-4

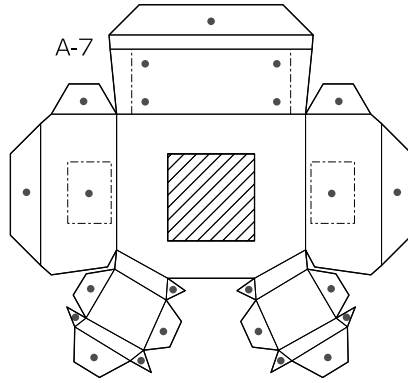
山折り



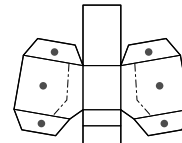
A-5



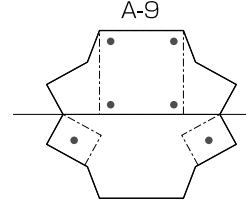
A-6



A-7

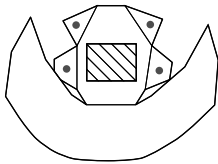


A-8

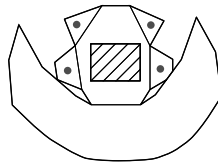


A-9

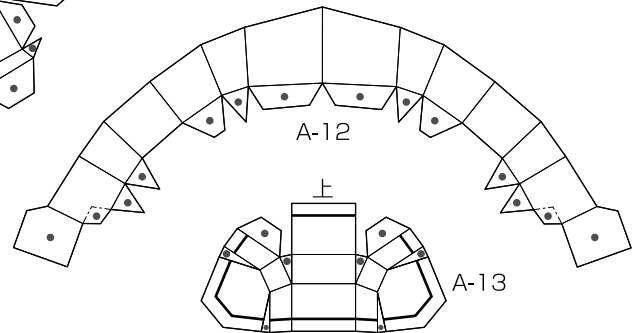
二つ折りでして張り合わせる



A-10



A-11



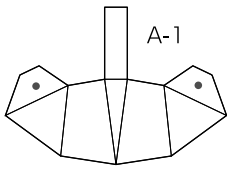
A-12

上

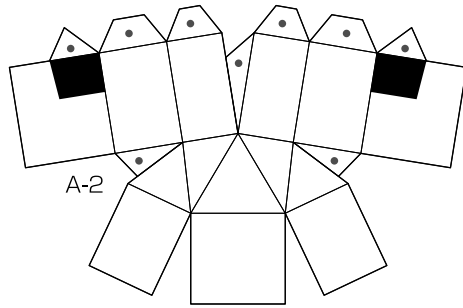
A-13

A
緑

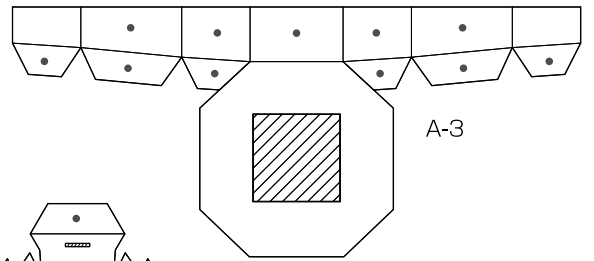
A4サイズ



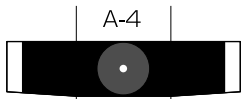
A-1



A-2

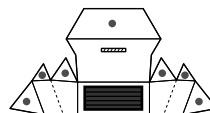


A-3

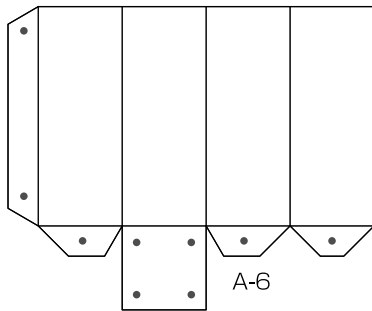


A-4

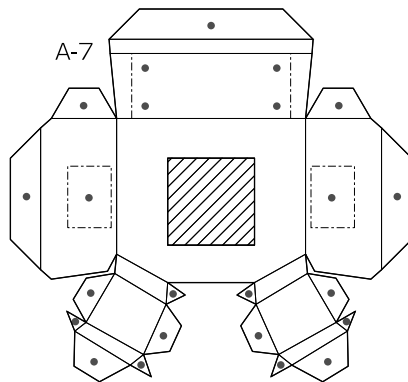
山折り



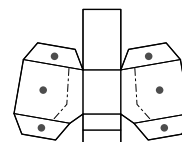
A-5



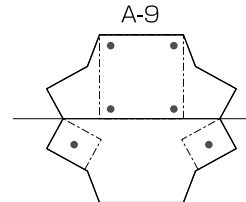
A-6



A-7

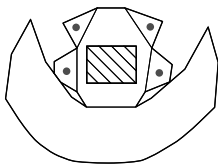


A-8

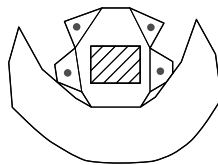


A-9

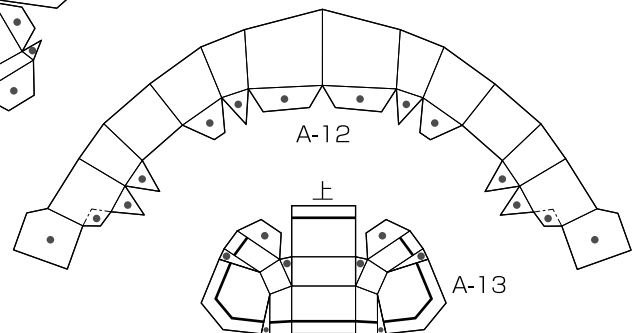
二つ折りでして張り合わせる



A-10



A-11



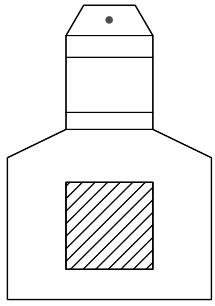
A-12

上

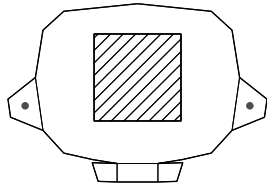
A-13

B
青

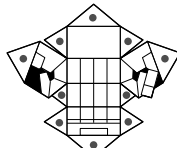
A4サイズ



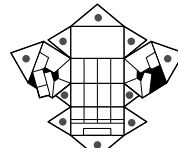
B-1



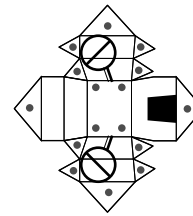
B-2



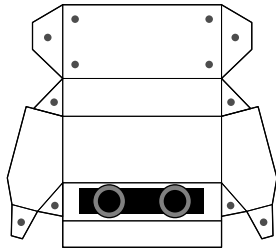
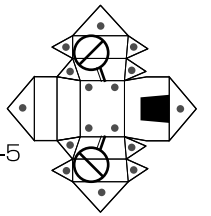
B-3



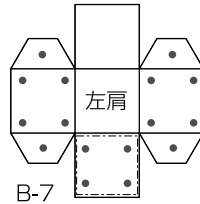
B-4



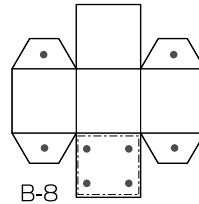
B-5



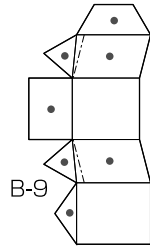
B-6



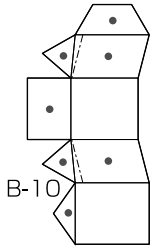
B-7



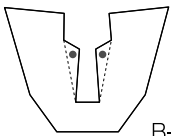
B-8



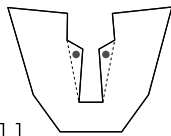
B-9



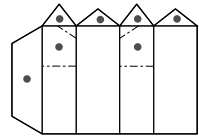
B-10



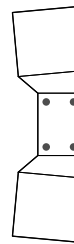
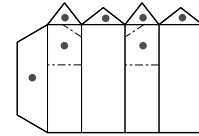
B-11



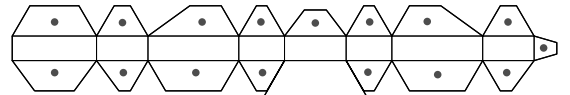
B-13



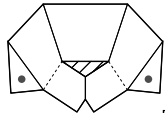
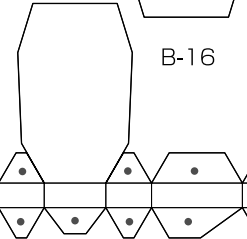
B-14



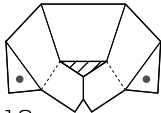
B-15



B-16



B-12

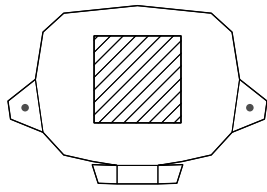


B
青

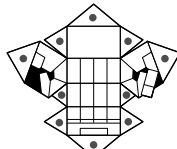
A4サイズ



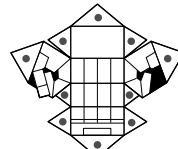
B-1



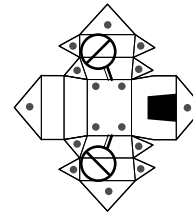
B-2



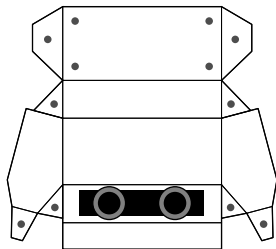
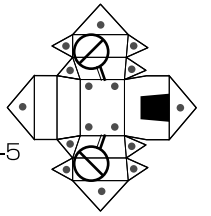
B-3



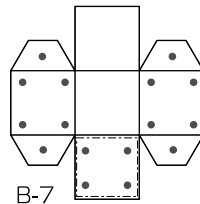
B-4



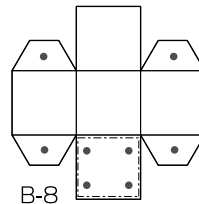
B-5



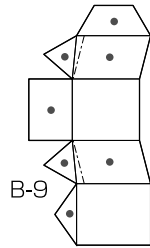
B-6



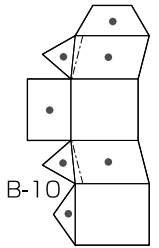
B-7



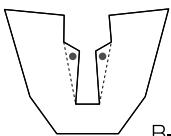
B-8



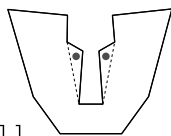
B-9



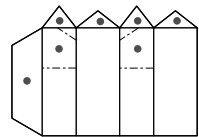
B-10



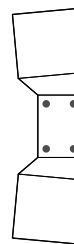
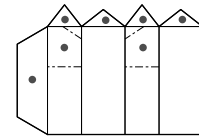
B-11



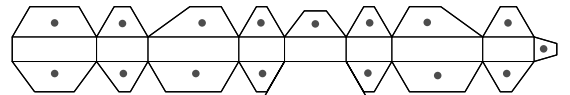
B-13



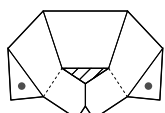
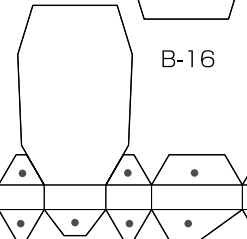
B-14



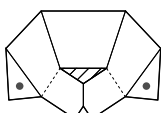
B-15



B-16



B-12





A4サイズ



C-1



C-1



C-1



C-1



C-1



C-1



C-1

指定線・マークについて

- 指示があるときを除き、印刷面が表になるように組み立ててください。
- 印が「表のりしろ」、○印が「裏のりしろ」です。●印は印刷面、○印は裏面にボンドを塗って対応する面と接着してください。
- 折り線はカッターなどで軽くなぞって折り目をつけてから折り曲げます。

切断線	山折り	表のりしろ	接着する	数字の順に組立	切断
目安線	谷折り	裏のりしろ	接着しない	切り抜く	

※()内の番号は右パーツの番号です。

