

指定線・マークについて

□指示があるときを除き、印刷面が表になるように組み立ててください。
 □●印が「表のりしろ」、○印が「裏のりしろ」です。●印は印刷面、○印は裏面にボンドを塗って対応する面と接着してください。
 □折り線はカッターなどで軽くなぞって折り目をつけてから折り曲げます。

切断線	山折り	表のりしろ	接着する	数字の順に組立	切断
目安線	谷折り	裏のりしろ	接着しない	切り抜く	

※()内の番号は右パーツの番号です。

1

2

3

4

5 ※左右作る

※角度注意

6

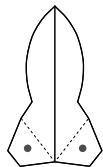
7

※取付位置参考図

8 ※左右作る

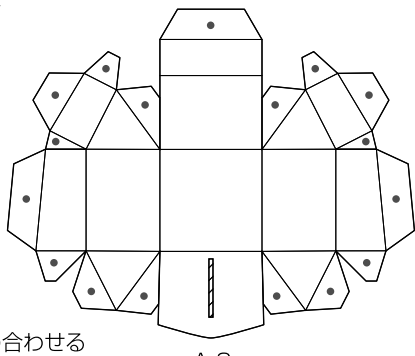
9

10

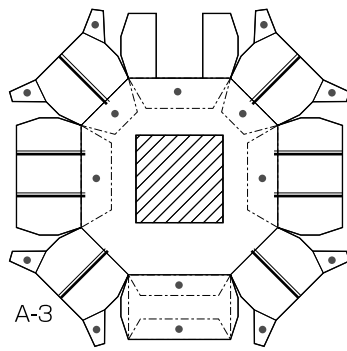


A-1

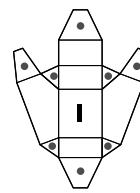
二つ折りにして貼り合わせる



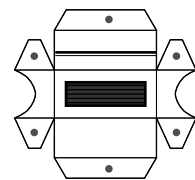
A-2



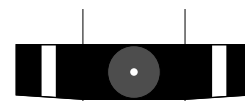
A-3



A-4

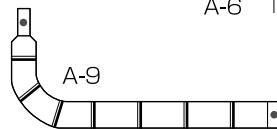


A-5



A-6

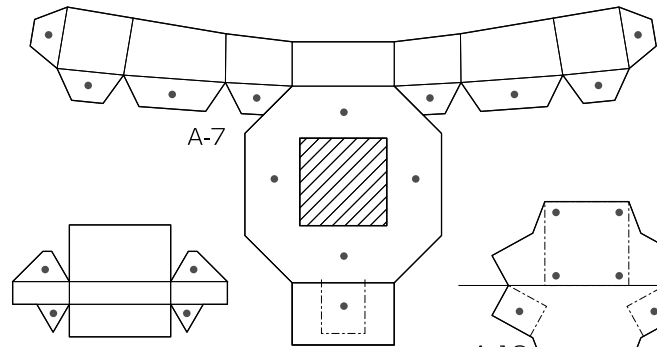
山折り



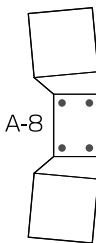
A-9



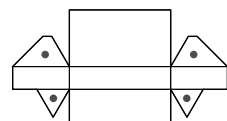
A-10



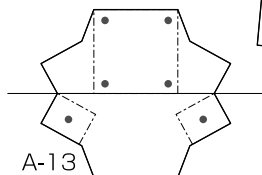
A-7



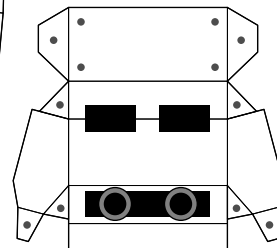
A-8



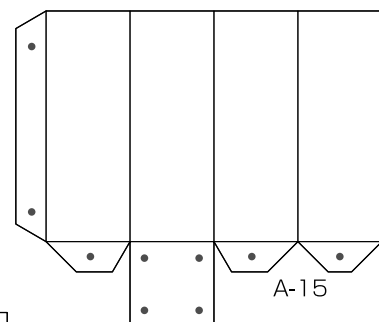
A-11



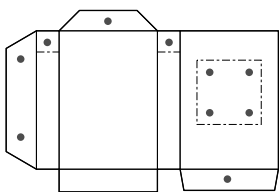
A-13



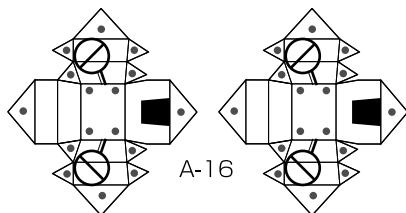
A-14



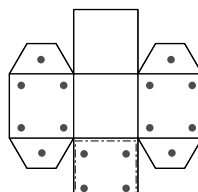
A-15



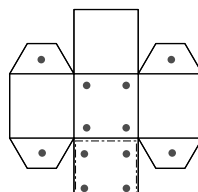
A-12



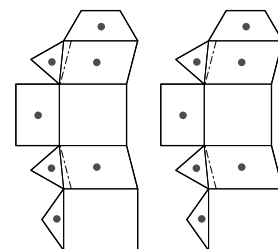
A-16



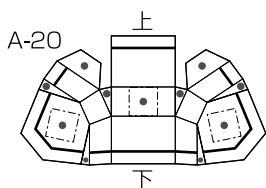
A-17



A-18



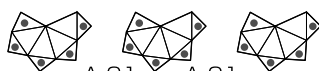
A-19



A-20

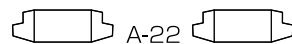
上

下

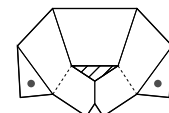


A-21

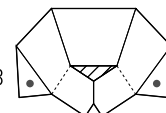
A-21



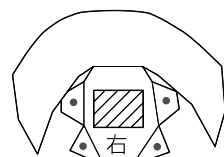
A-22



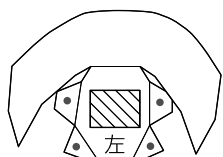
A-23



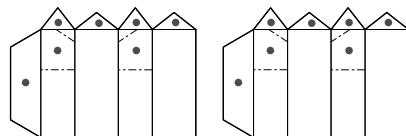
A-23



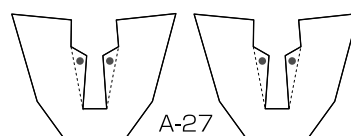
A-24



A-25



A-26



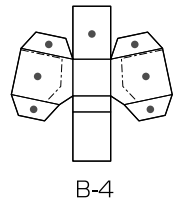
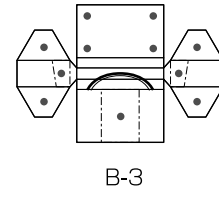
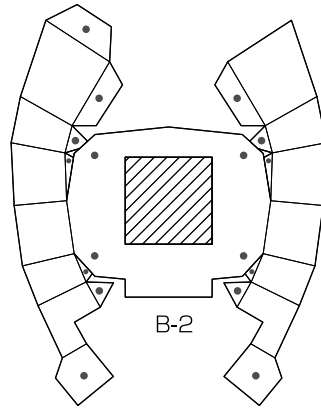
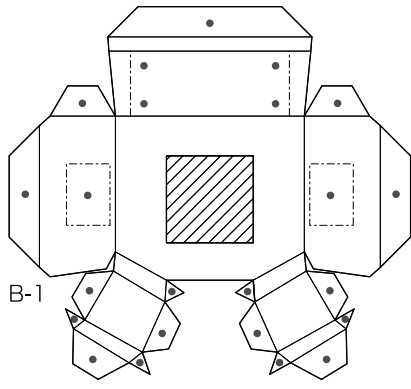
A-27



A-28

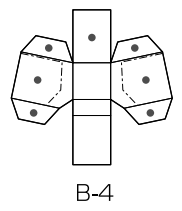
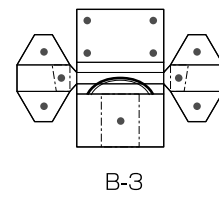
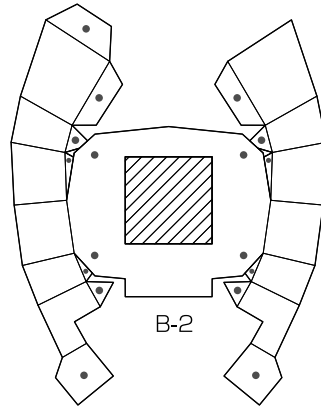
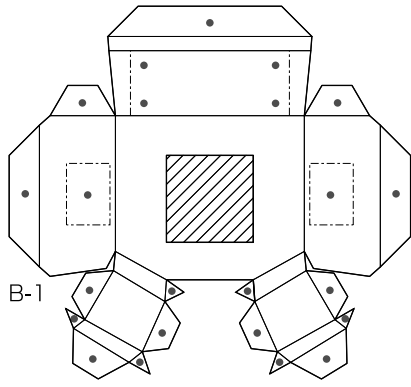
B
小豆色

A4サイズ



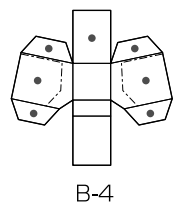
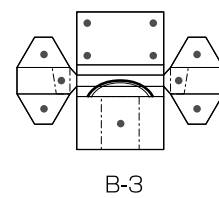
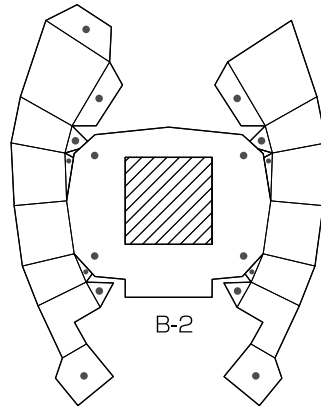
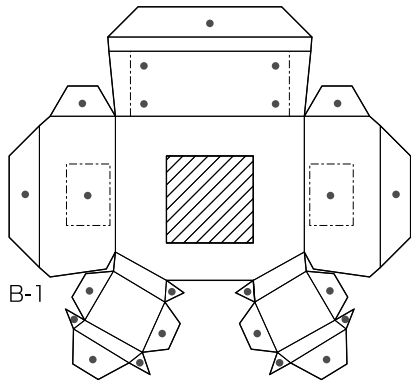
B
小豆色

A4サイズ



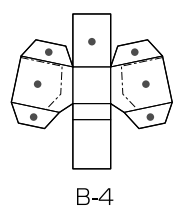
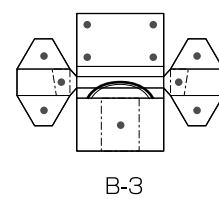
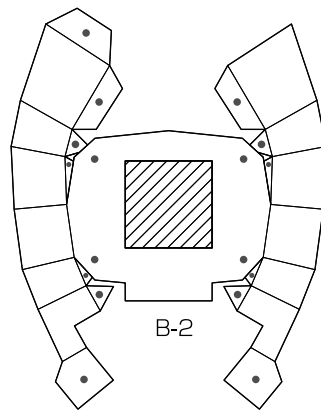
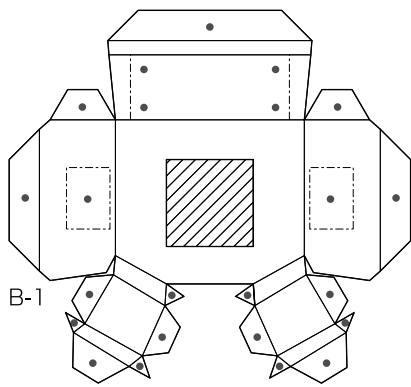
B
小豆色

A4サイズ



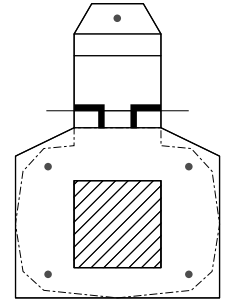
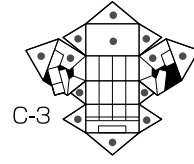
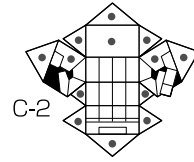
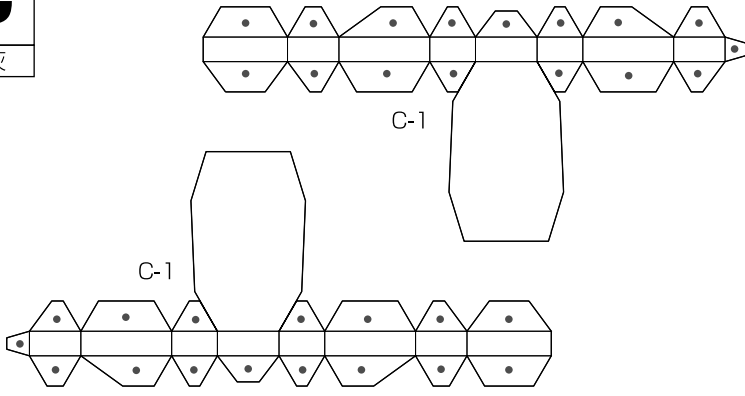
B
小豆色

A4サイズ



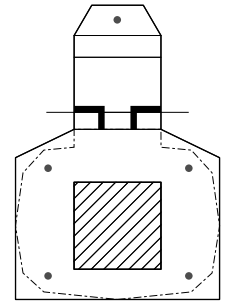
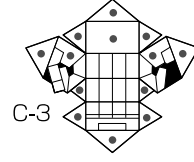
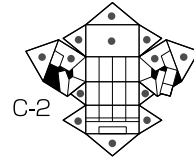
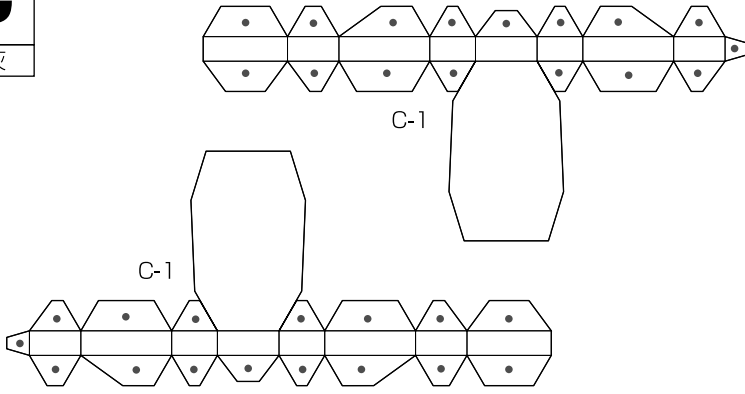
C
濃灰

A4サイズ



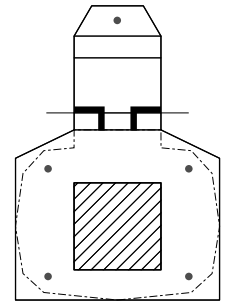
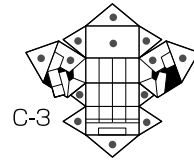
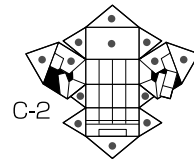
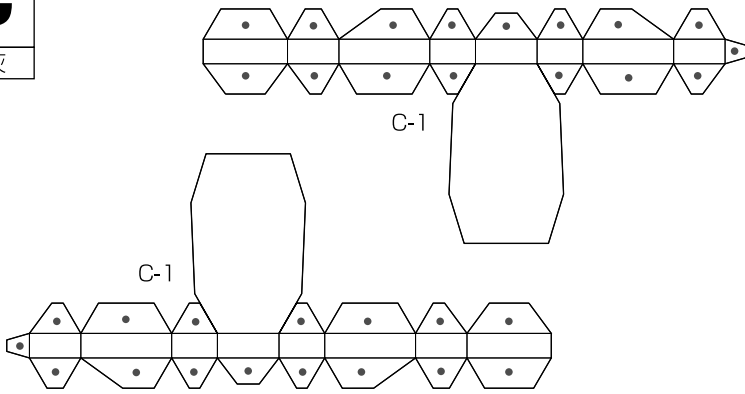
C
濃灰

A4サイズ



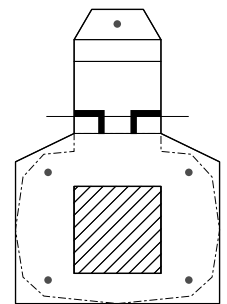
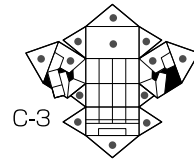
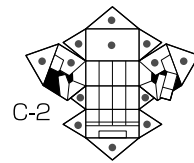
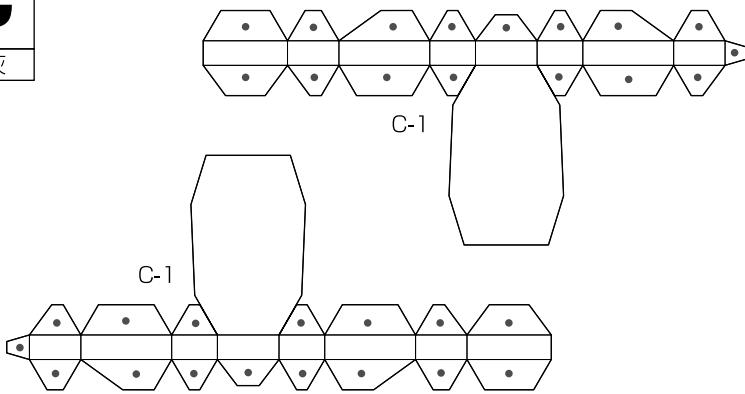
C
濃灰

A4サイズ



C
濃灰

A4サイズ





A4サイズ



D-1



D-1



D-1



D-1



D-1



D-1



D-1